



Face to face Club meetings are currently in recess due to the Coronavirus (COVID-19) restrictions.



www.mountmartharotary.org.au
mountmartharotary@gmail.com

30th March 2020

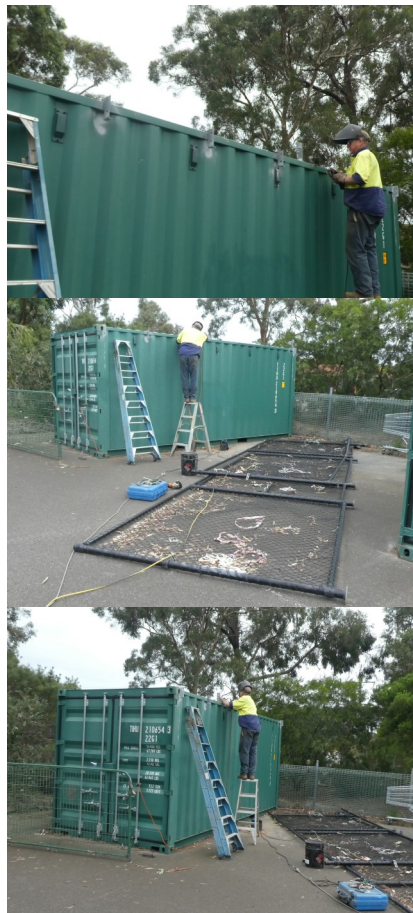
The wheels of Rotary never stop turning, with Greg Buchanan and Colin Stokes this week working on the Bike Enclosure at Mornington Park Primary School.

Greg has adjusted the position of one container using a crane, to suit materials that are being used. Brackets have now been welded to the containers.

Purlins (steel Beams) will be bolted to the brackets to span the containers, to support a Corrugated Iron Roof.

The woven wire, posts and gate shown on the ground will be re-stretched and welded to the two containers to form a front for the enclosure.

Woven wire will be attached at the rear of the enclosure thus creating a secure storage. Some new bike racks will be purchased to increase organized storage of bikes.



Rotary Club of Mt Martha
PO Box 342,
Mornington 3931

Rotary International
World President:
Mark Maloney

District Governor 9820:
Adrian Froggatt

Mount Martha President:
Peter Rawlings
0418 360 250

Secretary:
Wayne Norris
0408 344 512
eversfield2017@outlook.com

Bulletin Editor:
Byron Groves
**Contributions required
by Thursday 6pm each
week to**
byron.groves58@gmail.com

Website Editor:
Colin Stokes
chstokes@optusnet.com.au

This week the Club will go into Virtual Meeting mode with a ZOOM Meeting to be held on **Monday 30th March at 7.00PM** until approx. 7.45PM. See emails for instructions on how to connect. There will be a "test run" at 7.00PM on Sunday (29th March) night for those who are unaccustomed to ZOOM. During the meeting Christine Williams will then take us into our Teams for a quick catch up. Can I encourage all of our Members to join the Meeting on Monday night where possible. See you all on Monday!

Finally and importantly, I trust this finds you and yours well.

Many thanks to all, President, Peter Rawlings

Rotary Overseas Recycled Playgrounds (RORP)



promoting the value of play



We have all heard about RORP at our Club meetings thanks mainly to Rotarian, Wayne Jenkins, but here is a short message about the RORP story. The RORP story continues to grow and has now expanded across Victoria to encompass all Rotary Districts.

The 4th container of playgrounds is loaded and about to be shipped by Donations in Kind to Sri Lanka.

Our sincere gratitude to Laurie Fisher at Donations in Kind (DIK) for his unfailing support and patience with loading, shipping and the truck.

There are now 25 councils involved and we have also partnered with a number of schools. Individual "cells" have arisen at Ivanhoe and Mount Martha where those Rotary Clubs manage their own contacts, harvesting and delivery to Donations in Kind.

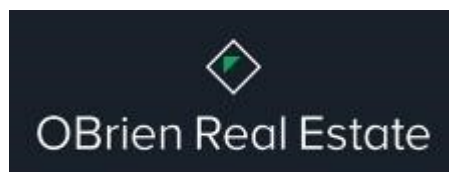
Playground have already been shipped to and installed in Timor Leste, the Philippines and Tanzania.. A scoping plan is taking place to commence shipment to Nepal through one of our members and costings and connections are being explored.

Would you like to be involved? Do you have a school, council or country connection? The cost to donating councils or schools is \$600, just sufficient to cover the cost of shipping a container of 7 playgrounds on a major shipping route. Timor Leste and Nepal are more expensive so the donation/funding model will be negotiable there.

Friday the 13th of March was not unlucky for RCMM members. We spent the morning loading the [Rotary Donations in Kind](#) truck with playgrounds that have been saved from landfill. The next day, we filled a shipping container with these recycled playgrounds which are being sent to Sri Lanka thanks to the efforts of [Rotary Overseas Recycled Playgrounds](#)(RORP). A real win – win!

See <https://www.rotaryflemington.org.au/.../rotary-overseas-recyc...>
[#rotaryoverseasrecycledplaygrounds](#) [#peopleofaction](#)

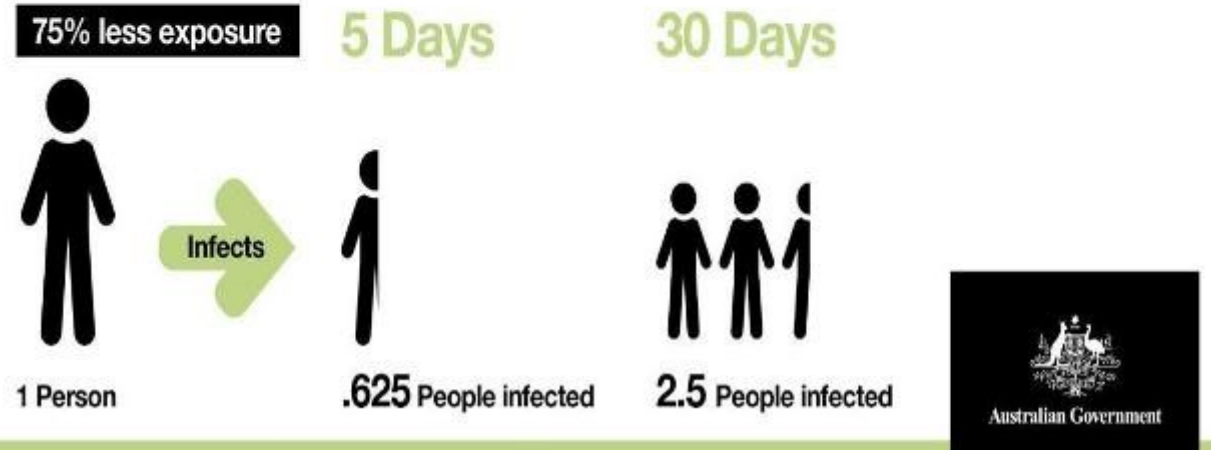
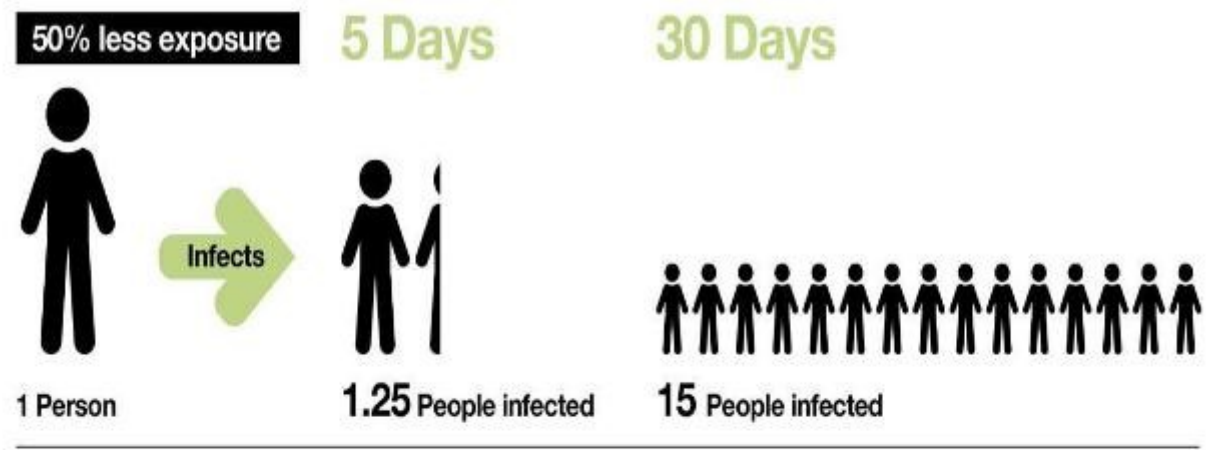
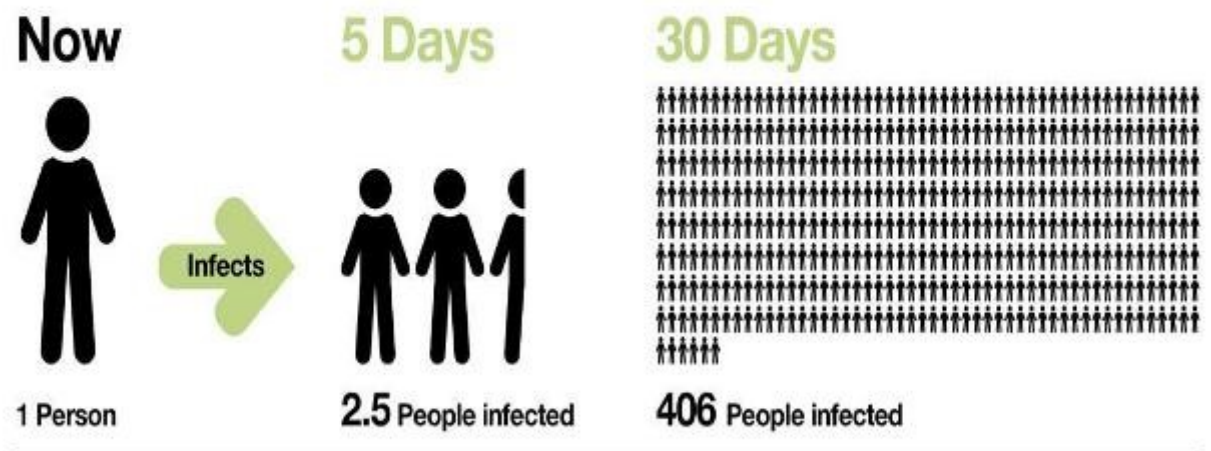
OUR COMMUNITY SUPPORTERS, TO WHOM WE ARE VERY GRATEFUL



IMPORTANT MATTERS TO CONSIDER DURING THIS COVID-19 CRISIS

Why social distancing matters

Social distancing of 1.5 metres decreases the exposure of coronavirus (COVID-19).



IMPORTANT MATTERS TO CONSIDER DURING THIS COVID-19 CRISIS



How every single Australian's actions affect the spread of coronavirus

To effectively slow the spread of coronavirus, the vast majority of people will need to cut out nearly all their in-person social interactions, new University of Sydney modelling shows. That's on top of existing measures like travel restrictions.

